

ROLLER RACK ASSEMBLY

IMPORTANT INFORMATION

- It is vital that you follow the correct fitting procedure and tighten all fixings correctly
- This product is only compatible with P Line and T Line bikes
- If you are unsure of the correct fitting process please consult your Brompton dealer or Brompton Customer Service support@brompton.co.uk

MUDGUARD FITTING PROCESS

Before fixing the roller rack to the bike, a roller rack specific mudguard (one is supplied with the roller rack) must first be fixed to the bike. It is advised that the rear wheel is removed when fitting or removing the mudguard, please see datasheet **ds-rrwh-adv** on how to remove the rear wheel.

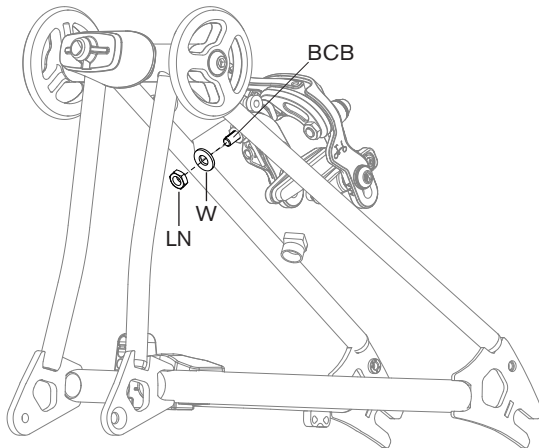


Fig. 1

Does the bike have a rear mudguard already installed? If yes; please see **ds-rmg-adv** on how to remove the rear mudguard.

If the bike does not have a rear mudguard already installed; unscrew the locking nut LN and washer W from rear brake caliper bolt BCB using a 12mm spanner (fig. 1).

Does the bike have a rear reflector already installed? If so, remove the rear reflector by unscrewing the two M5 screws fixing it to the rear frame using a 3mm hex key (fig. 2).

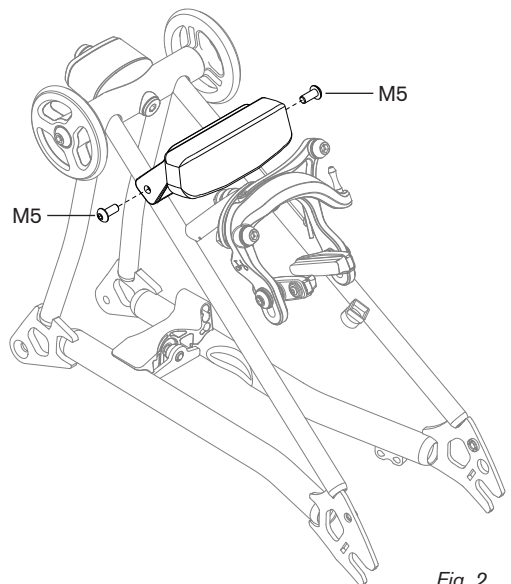


Fig. 2

Guide the new mudguard through the brake calliper, then guide the mudguard bracket MB onto the rear brake caliper bolt BCB. On the front end of the mudguard, there is a circular cut-out which should rest on the screw protruding from the back of the locking block. Reattach the washer W and locking nut LN to the rear brake caliper bolt, tightening to 2Nm (fig. 3). Once the mudguard is fitted, refit the rear wheel, see **ds-rrwh-adv** for advice.

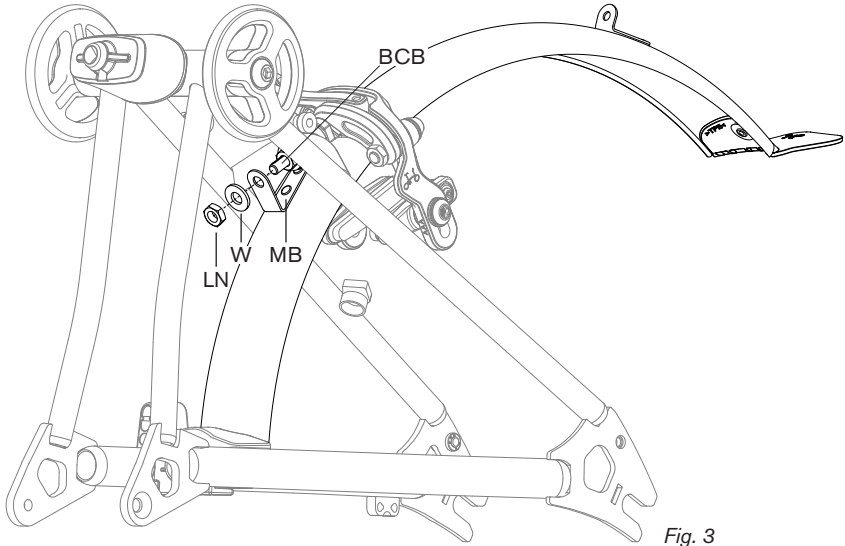


Fig. 3

ROLLER RACK FITTING PROCESS

To fix the roller rack to the rear frame, align the roller rack with the four fixing points on the rear frame. First, attach the top two fixing points on the roller rack to the rear frame. Do this by using a M5 screw and washer W, tightening about halfway using a 3mm hex key. Repeat this with the bottom two fixing points. Once the roller rack is in the correct position, tighten all screws to 2Nm (fig. 4).

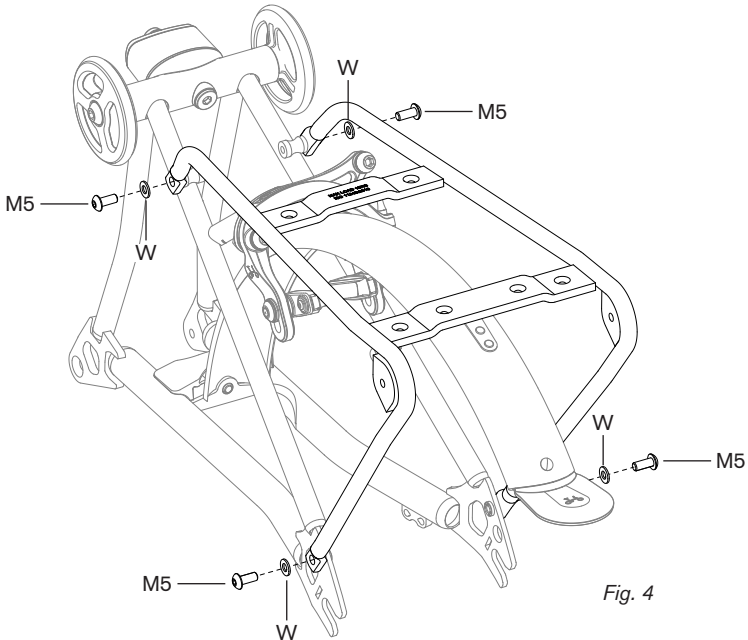
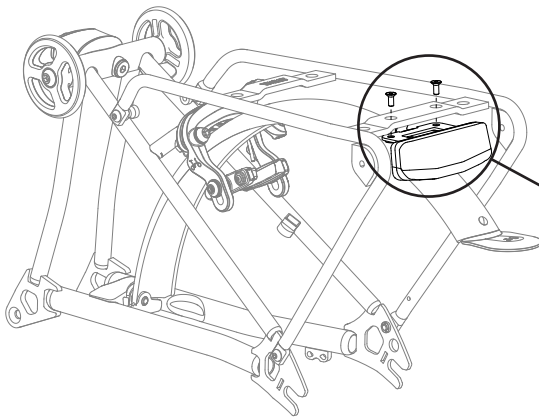


Fig. 4



To fix the reflector to the roller rack, align the reflector underneath the two countersunk holes on the roller rack, and attach using the two M4 countersunk bolts. Tighten to 2Nm using a 2.5mm hex key (fig. 5).

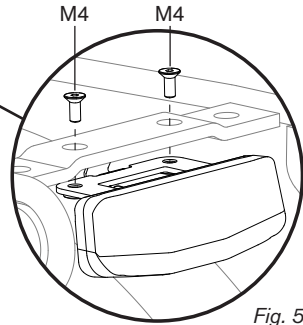
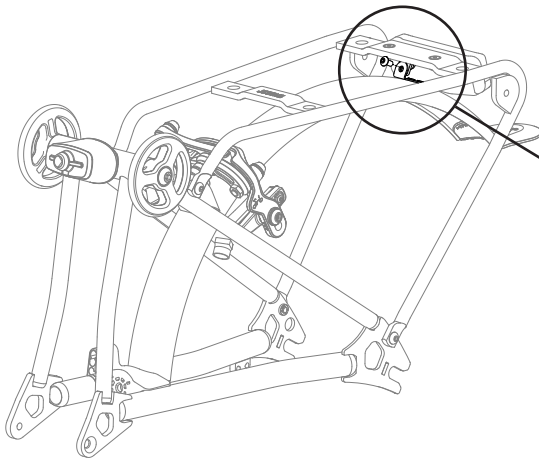


Fig. 5



To fix the reflector to the mudguard, use the M4 screw to attach the mudguard bracket to the fixing hole on the reflector. Tighten to 1.5Nm using a 2.5mm hex key (fig. 6).

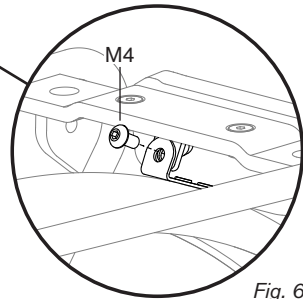
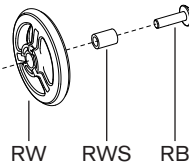
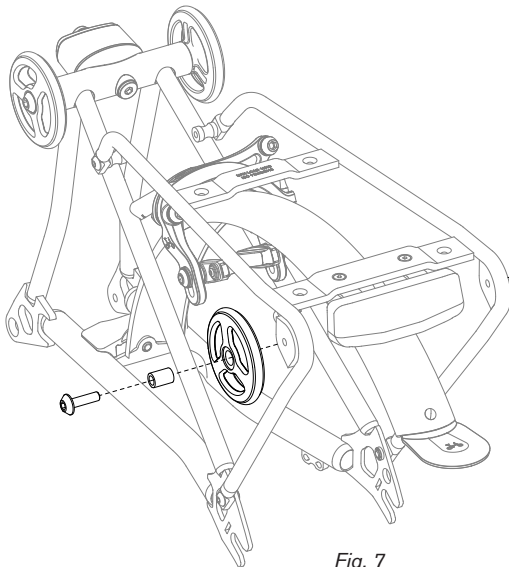


Fig. 6



To attach the roller wheels to the roller rack, first insert the roller wheel spacer RWS into the roller wheel RW, then align this with the fixing point on the roller rack. Use the roller bolt RB to attach the roller wheel to the roller rack, tightening to 5Nm using a 5mm hex key. Repeat this with the roller wheel on the opposite side of the roller rack (fig. 7).

Fig. 7

