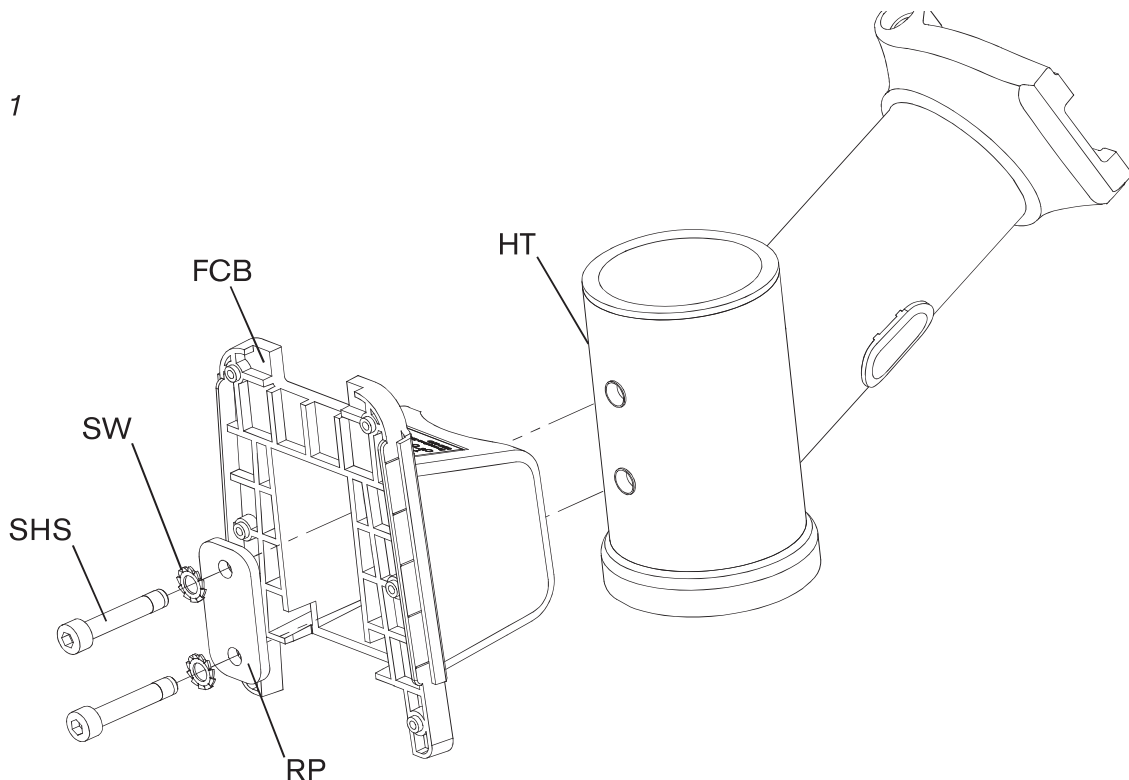


FRONT CARRIER BLOCK - ELECTRIC G LINE

IMPORTANT INFORMATION

- It is vital that you do not omit either of the serrated washers SW when fitting the retaining plate RP and that the correct torque is used on the screws STS
- The blue patches on the screws are there to lock them in place; do not tamper with, remove or expose this patch to moisture as the locking action will be greatly reduced
- The screws should not be re-fitted after the initial instillation; the blue patch will not function correctly
- The screws should be replaced with the correct Brompton replacement parts
- If you are unsure of the correct fitting process please consult your Brompton dealer or Brompton Customer Service support@brompton.co.uk

Fig. 1



FITTING INSTRUCTIONS

Fit one of the two serrated washer to one of the socket head screws SHS and insert into the retaining plate RP.

Insert the partially assembled retaining plate RP, serracted washer SW and a screw SHS into the front of the carrier block body FCB.

Fit this to the head tube HT on the bicycle as shown ; orientate correctly (fig.1).

Insert the first screw SHS by two to three turns, do not tighten fully.

Insert the second bolt with serrated-washer, tighten by two to three turns.

Tighten each screw by 3 turns in a top to bottom sequence, alternating each time.

Finally tighten both bolts a Torque of **4.5Nm**

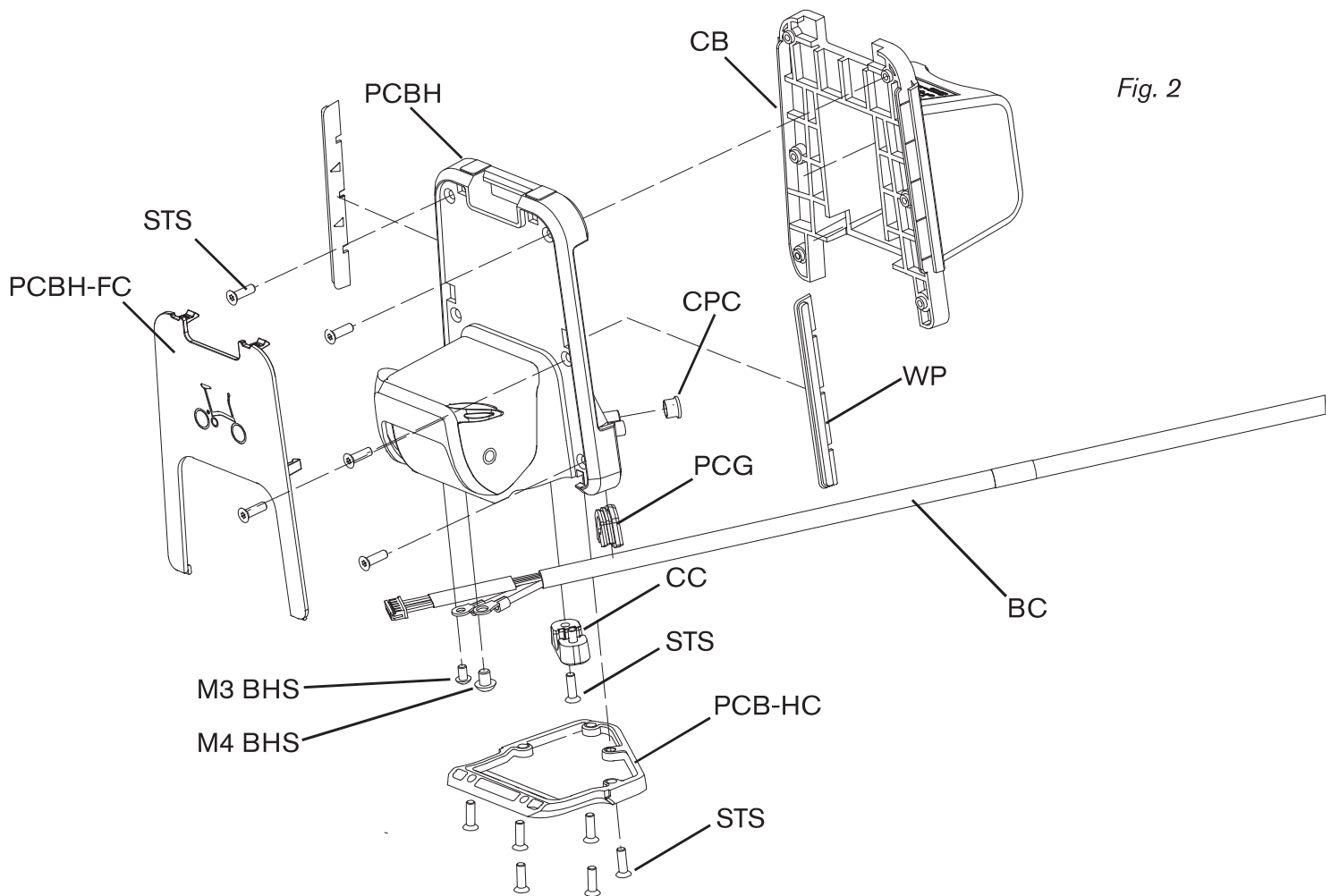


Fig. 2

Assembling the PCB housing

Fit the wear pad WP in the PCB housing in the orientation shown (fig. 2)

Fit the PCB housing PCBH to the carrier block as shown, ensuring that the wear pads WP are correctly seated.

Insert x6 self tapping screw STS by a few turns onto the PCBH. Once all the STS screws are partially inserted, tighten to 0.5Nm.

Connect the battery cable BC to the PCB using the M3 BHS and M4 BHS screws, tighten to 0.5Nm, then connect the remaining Molex plug to the corresponding plug on the PCB.

Fit the cable grommet PCG around the battery cable BC, and align correctly with the notch on the PCB housing PCBH.

To secure the battery cable BC, fit the cable clamp CC, followed by the x2 self tapping screws STS and tighten to 0.5Nm.

Fit the PCB-HC, followed by the x6 STS screws and tighten to 0.5Nm.

The PCB housing front cover PCBH-FC can be press fitted into place as shown (fig.2).

Ensure any unused ports on the PCBH are capped with the CPC cap.

The maximum load of the front carrier block included the battery is 10kg. Do not exceed the maximum load for the front luggage or modify the front carrier block or front luggage frame. Ensure that when carrying luggage you do not exceed the maximum load for the bicycle (including luggage and rider) of 130Kg. The fixings of the front carrier block should be checked regularly. The front carrier block is not suitable for mounting of a child seat. Do not attempt to carry luggage anywhere else on the bicycle. The bike is not designed to pull a trailer.

When the luggage carriers are loaded, the bicycle may behave differently, steering and braking may be affected. Luggage should be loaded evenly.

Before riding ensure that the front bag and front carrier block are secure and there are no loose straps or items of luggage that could get caught in the wheels of the bicycle.

Ensure that any luggage fitted does not obscure the reflectors and any lighting fitted to the bike.

This luggage carrier is only compatible with a Brompton Electric bicycles Brompton Electric luggage. Only luggage carriers and luggage manufactured or distributed by Brompton Bicycle Ltd should be used with the Brompton bike.