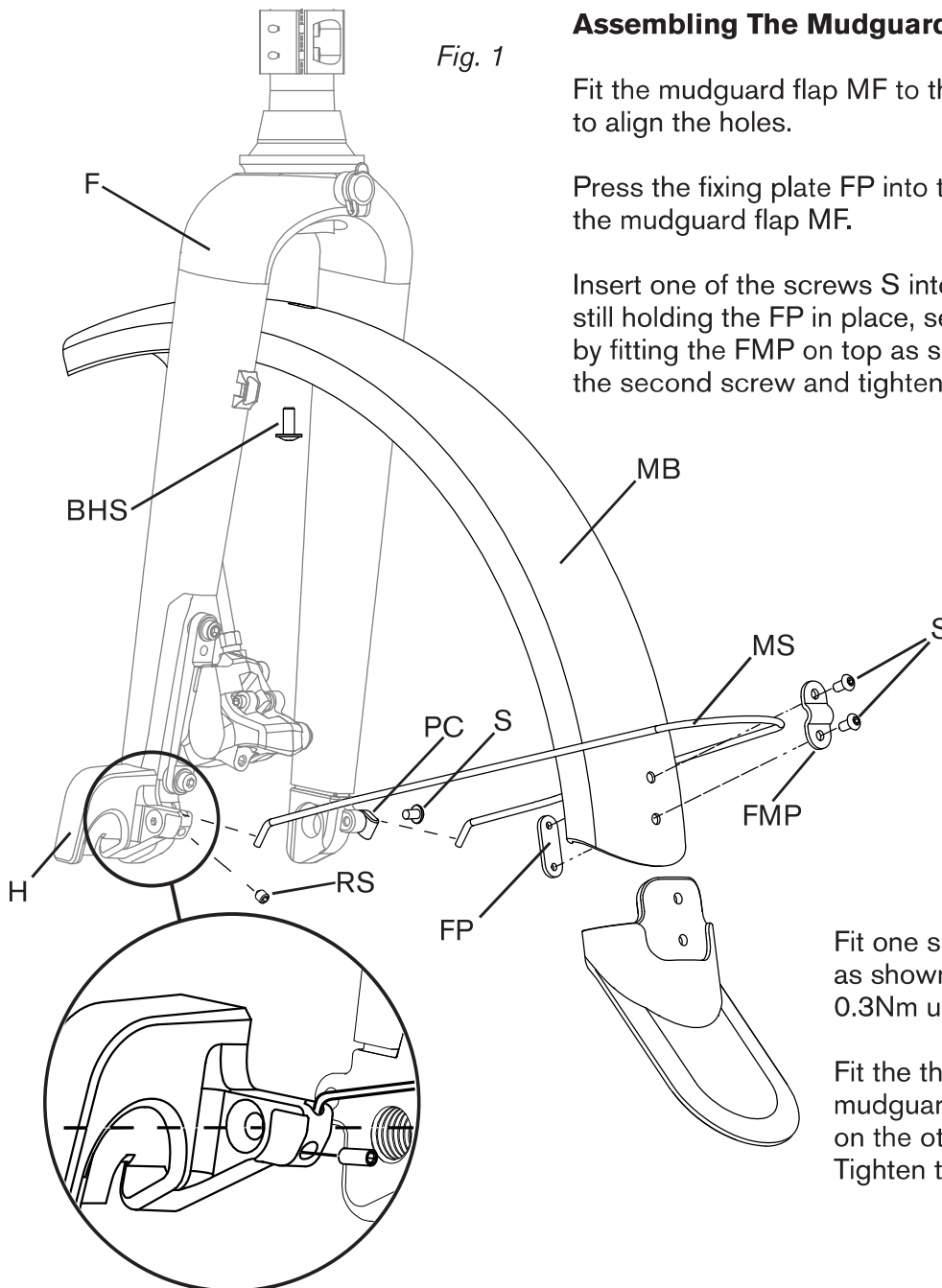


FRONT MUDGUARD - G LINE

IMPORTANT INFORMATION

- It is vital that you follow the correct fitting procedure and tighten the fixing bolt correctly
- If you are unsure of the correct fitting process please consult your Brompton dealer or Brompton Customer Service support@brompton.co.uk

Fig. 1



Assembling The Mudguard

Fit the mudguard flap MF to the mudguard blade MB, making sure to align the holes.

Press the fixing plate FP into the recess located on the reverse of the mudguard flap MF.

Insert one of the screws S into the front mounting plate FMP. While still holding the FP in place, secure the mudguard stay MS in place by fitting the FMP on top as shown (fig. 1), then tighten partially. Fit the second screw and tighten both screws firmly.

Fitting The Mudguard To The Fork

To fit the front mudguard, it is recommended that this is done with the bike in a work stand and with the front wheel removed.

Move the assembled mudguard into position, then fit the Button head screw BHS to secure the mudguard blade MB to the underside of the center of the fork F as shown.

Fit one side of the mudguard stay to the hook H as shown, and tighten the recess screw RS to 0.3Nm using a 2mm hex key.

Fit the the P-clip PC to the other side of the mudguard stay, then fit it to the mouting point on the other side pf the forkas shown (fig. 1). Tighten to 3Nm using a 3mm hex key.

REMOVAL

To remove the front mudguard, it is recommended that this is done with the bike in a stand and with the front wheel removed.

Unscrew the recess screw RS by a few turns (Do not remove), enough to release the mudguard stay MS. Uncrew the screw S on the other side by a few turns, enough to release the mudguard stay MS from the P-clip.

Uncrew and remove the button head screw BHS mounting the mudguard blade to the upside of the fork.