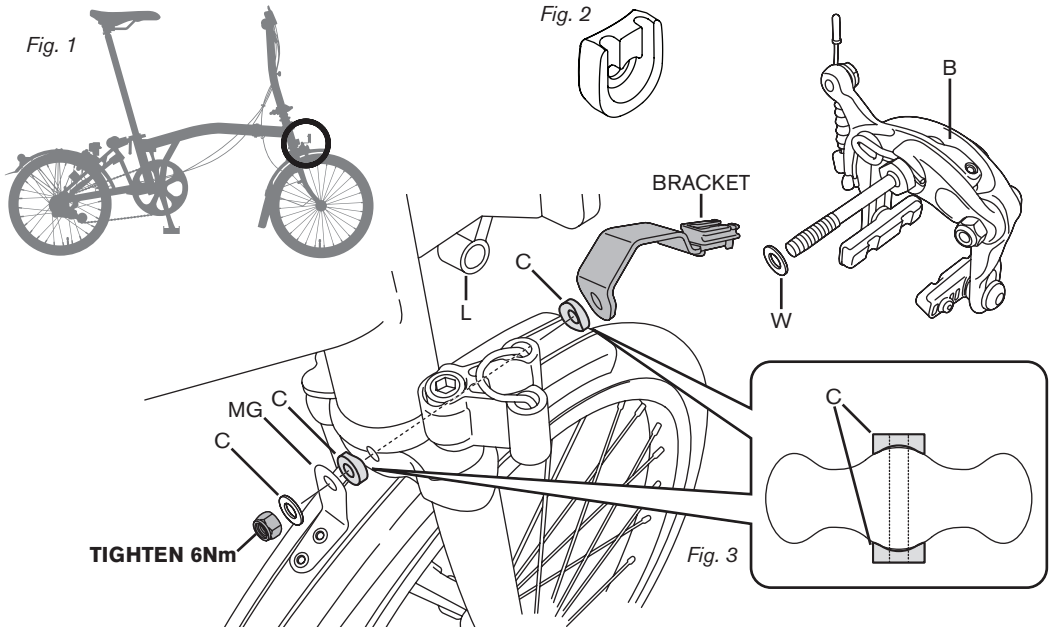


BROMPTON 500LM FRONT LIGHT

IMPORTANT INFORMATION

- Before using the bike, make sure the light is firmly secured to the bracket and functions properly
- This product is water-resistant and can be used in the rain, do not submerge in water
- If the light becomes dirty, clean with a soft cloth
- Aggressive solvents and detergents will damage the product
- Batteries should be disposed of in accordance with local regulations
- Charging and lighting times are approximate and will vary with environmental conditions and usage
- The battery is shipped with a small charge and needs to be fully charged before use

FITTING THE BRACKET TO A PRE-2018 BIKE



When the light is bought separately the bracket will need to be fitted to the front fork (fig. 1). If bought as part of a complete bike the bracket is already installed on the bike, in this case skip to page 2.

- The bracket should be fitted between the fork crown and front brake (fig. 3), if the bike has a front reflector or dynamo light bracket fitted it will need to be removed, along with the die cast washer (fig. 2) if used
- Disassemble the parts by undoing the 10mm nut behind the fork crown, along with the washer W
- Pull the brake caliper forward and remove the concave washers C reflector bracket and washer W
- Reassemble with the light bracket in the order as shown (fig. 3) with concave washer C fitted in the correct orientation on both sides of the fork crown
- Ensure that the nut is tightened to 6Nm
- Check that the mudguard stay MG, the bracket and the brake caliper are aligned parallel to the front wheel and that the brake pads do not rub on the braking surface of the wheel when not applied
- The mounting hole in the bracket is slotted to allow some up/down adjustment. Check that the bracket is not in contact with the brake B and that the rear of the light does not touch the latch L, if a front carrier block is fitted to the bike

FITTING THE BRACKET TO 2018 OR NEWER BIKE

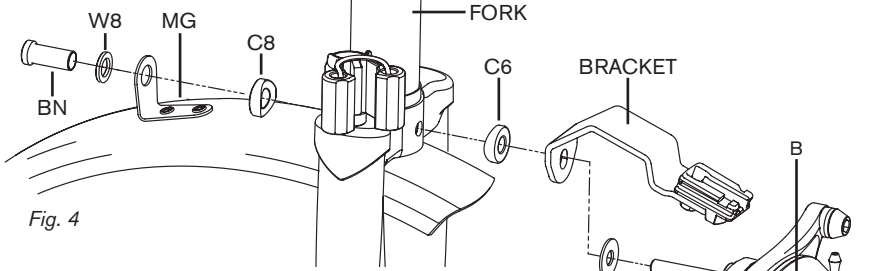


Fig. 4

- The bracket should be fitted between the fork crown and front brake (fig. 4), if the bike has a front reflector or dynamo light bracket fitted it will need to be removed, along with the die cast washer (fig. 2) if used
- Disassemble the parts by undoing the barrel-nut BN behind the fork crown, along with the washer W8
- Pull the caliper forward and remove the concave washers C6 reflector bracket and washer W
- Reassemble with the light bracket in the order as shown (fig. 4) with concave washer C6 (6mm hole) and C8 (8mm hole) fitted in the correct orientation (fig. 5) on both sides of the fork crown
- Ensure that BN is tightened to 8Nm
- Check that the mudguard MG, the light bracket and the brake caliper are aligned parallel to the front wheel and that the brake pads do not rub on the braking surface of the wheel when not applied
- The mounting hole in the bracket is slotted to allow some up/down adjustment. Check that the bracket is not in contact with the brake B and that the rear of the light does not touch the latch, if a front carrier block is fitted to the bike

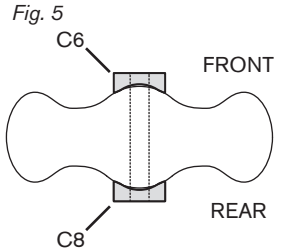


Fig. 5

HOW TO CHARGE

Lift the charge port cover (fig. 6) and connect the light to a computer or mains USB charger, using the USB cable supplied with the light. We recommend a 500+mA (USB2.0) charger.

When charging, the power button will light-up red; when the battery is fully charged the light will turn off.

After charging is complete, remove the cable and install the port cover.

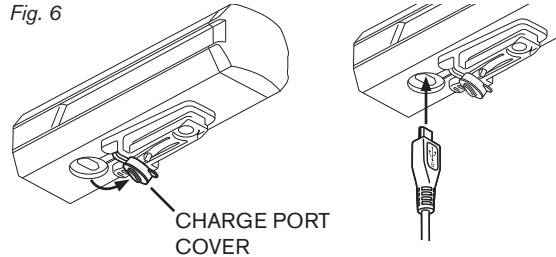


Fig. 6

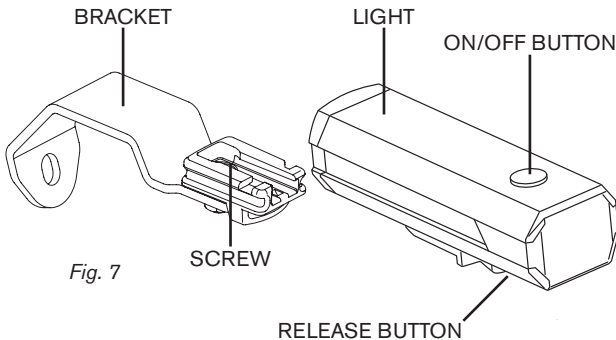


Fig. 7

FITTING THE LIGHT TO THE BIKE

- Once the light bracket is installed, fit the light by simply sliding into the plastic housing (fig. 7) on the front of the bracket until the light 'clicks' into place
- To remove the light, pull forward while pressing the release button (fig. 7) upward, towards the body of the light
- Regularly check that the fixing screw (fig. 7) on the bracket is tight

OPERATING THE LIGHT

To turn the light on or off press and hold the On/Off switch (fig. 7). The On/Off switch is also used to cycle through the different lighting modes, these are: High, Low, Daytime HyperConstant and Flashing. Double-clicking the On/Off switch will return the High setting. When you turn the light on it will be in the mode last used. When the On/Off switch is illuminated red, the battery power is 20% or less and the light should be charged as soon as possible.

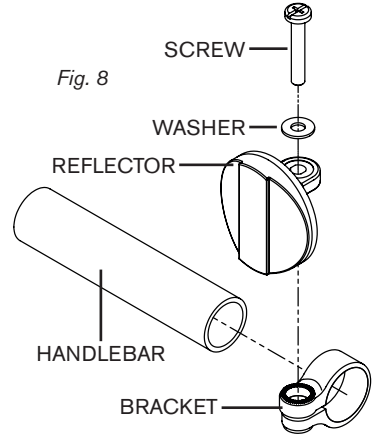
When the run-time decreases significantly the battery is approaching the end of its life and will need replacing.

REFLECTOR FITTING

The reflector should be fitted to the handlebar as shown (fig. 8) close to the centre of the bar, near the handlebar clamp. The reflector should be facing forward and sit 'above' the handlebar.

For Low, Mid & High type bars the reflector should be fitted to the left hand side (fig. 9, as viewed when sitting on the bike) of the handlebar.

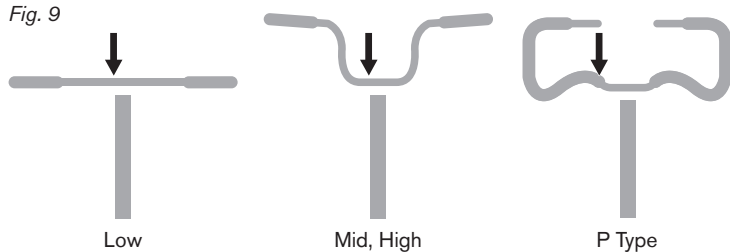
On a P type bike the reflector should be fitted adjacent to the grip (as far from the centre as possible) to stop it contacting the wheel.



⚠ WARNING

Ensure the reflector does not restrict the control cables or handlebar movement when riding.

The reflector should not contact the fork & front wheel or obstruct the control cables when folding/unfolding the bike.



SPECIFICATION

LIGHT SOURCE	High-intensity LED x 1
BATTERY	Li-ion 3.6v 2200 mAH
CHARGE	Micro USB plug
OPERATING TIME (Approximate)	High: 1.5 hours Low: 3 hours Daytime HyperConstant: 5 hours Flashing: 50 hours *Average run time at 20°C
STANDARD CHARGING TIME	Approx. 4 (1A) - 8 (0.5A) hours
TEMPERATURE RANGE	Charging: 41-104°F, 5-40°C Operating: 14-104°F, -10-40°C
RECHARGE/DISCHARGE CYCLES	Approx. 300 Cycles (until the rated capacity falls to 70%)
DIMENSIONS/WEIGHT	34 x 100 x 37 mm, 117g

